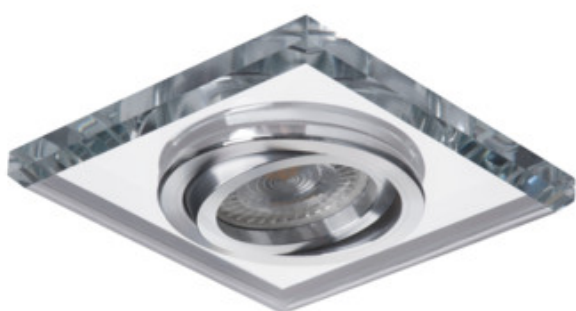


Ring for spotlight fittings

5905339267184



DESIGN
unique



A wide range of the Kanlux MORTA holder models will allow making very original arrangements in each house. Kanlux MORTA meet expectations of everyone that highly values products of high quality, characterized by attractive and original design.

GENERAL DATA:

Colour: silver
Necessity of using self-shielding lamps: yes
Place of assembly: Recessed mount in the ceiling
Place of application: Indoors
Minimum distance from the illuminated object: 0,5m
Decorative ring without a ceramic frame: yes
The product is not suitable to be covered with a heat-insulating material: yes
Length [mm]: 90
Width [mm]: 90
Height [mm]: 24
Assembly hole [mm]: Ø75-80

TECHNICAL DATA:

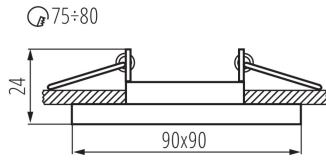
Rated voltage [V]: 12 AC; 12 DC; 220-240 AC
Maximum power [W]: max 10
Class of protection against electric shock: II/III
Light source: MR16/PAR16
Light source included: no
Cap: Gx5,3/GU10
Ambient temperature range to which the product can be exposed: 5÷25
Enclosure material: glass
Lighting-fixture angle regulation: in one axis
Lighting-fixture angle regulation [°]: 30
IP class: 20

LOGISTIC DATA:

Packaging method: 50
Number of units in the secondary packaging: 1
Number of units in the packaging: 50
Net unit weight [g]: 162
Grammage [g]: 201.2
Length of a unit pack [cm]: 11
Width of a unit pack [cm]: 4.5
Height of a unit pack [cm]: 11
Weight of a cardboard box [kg]: 10.06
Width of a cardboard box [cm]: 25

26718 MORTA CT-DTL50-SR

Ring for spotlight fittings



Height of a cardboard box [cm]: 24.5

Length of a cardboard box [cm] : 56

Volume of a cardboard box [m³]: 0.0343

ADDITIONAL INFORMATION:

- Decorative ring without a ceramic frame

